



Datastream 7i



Mobile Solutions

The nature of field service requires that technicians perform in an “occasionally connected” computing environment. So, while they may have some access to the corporate network and their centralized enterprise asset management application, much of their time is spent in work environments where there is no connectivity and no direct access to the application.

This can be a problem for mobile workers because they do not have access to their applications at the time when they need them most—in the field. Today, mobile workers need a true “mobilized” version of their existing asset performance management application. One that not only enables data capture, but also provides the functionality to enable better decision-making in the field. An application that not only enables technicians to log their hours, but also to access tools and knowledge so they can complete their jobs more efficiently and effectively.

Datastream 7i has met these demanding mobile computing requirements with Datastream 7i Mobile and Barcoding. These advanced modules are designed to help not only the technician in the field, but also the managers, clerks, and schedulers back at the office.

Datastream 7i Mobile

Datastream 7i Mobile provides a robust, mobile version of Datastream 7i that functions with or without network connectivity. This enables workers to roam between connected and disconnected environments without having to worry about losing application performance. It also means they can access, capture, and manage information directly from the job site, resulting in higher productivity and more effective decision-making.

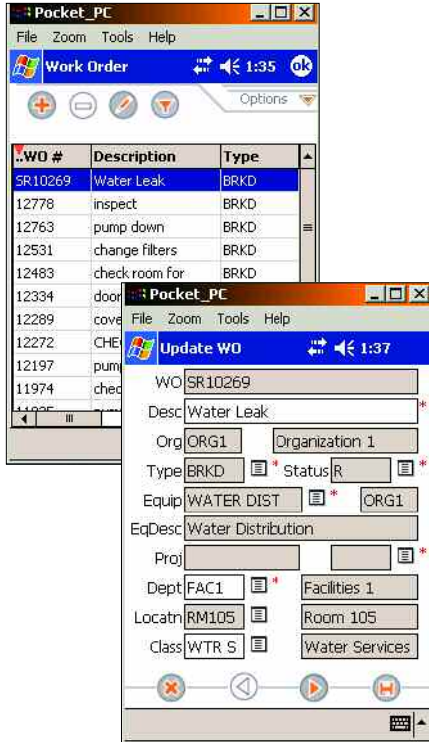
For example, a maintenance technician receives his work orders via a handheld device. As he goes to complete his first work order, he notices that another item needs to be repaired. Through his mobile device, the maintenance technician can record this ad-hoc work order in addition to the updating one that he was already assigned. With a paper-based or client-based system, the worker would most likely repair the item, but it would not be recorded. The mobile solution provides an easy way to keep up with both scheduled maintenance and those jobs that never seem to be documented, resulting in better data about the company’s physical assets and the performance of the workforce.

“On-the-Go” Asset Management

Datastream 7i Mobile puts the power of Datastream 7i onto any Pocket PC or handheld device. Customers can select the hardware vendor of their choice and still benefit from rich mobile functionality and an interface that is reminiscent of the Datastream 7i desktop interface. The familiar interface reduces training requirements and leads to higher productivity from field workers.



Datastream 7i Mobile



Drive workforce efficiency with asset and work information on handheld devices.

Datastream 7i Mobile includes a rich feature set, including functionality such as:

> **Work Order Management** Users can download work orders directly from the Datastream 7i database and then assign or re-assign those work orders to the appropriate individuals. This function also provides users with personalized “to-do” lists that are specific to the technician’s tasks at hand.

> **Calibrations** Calibrations have become of the utmost importance, particularly in situations where regulatory compliance, audits, and safety are concerned. These companies have to document the accuracy of their measuring instruments—such as gauges and meters—with absolute precision. Datastream 7i Mobile provides a simple and portable way for users to do this; the system automates calibration-result entry. Even at the handheld level, screens allow for calibration value entries that are then transferred back to Datastream 7i.

> **Record-Locking and 21 CFR 11 Support** Unlike any other solution on the market, Datastream 7i Mobile allows record-locking at the handheld level. This powerful and unprecedented capability makes compliance with 21 CFR 11 and other government regulations simpler than ever before. Companies can conduct validations, change work order status, support electronic signatures, run authentications, and more—all from the handheld device.

> **Meter Readings and Replacement** Users can enter meter values for any assigned piece of equipment. To further simplify the process, Datastream 7i Mobile automatically provides the appropriate unit of measure and meter name for each reading, ensuring accurate data collection and decreasing data-entry time.

And now, Datastream 7i Mobile lets users track the replacement of meters. This is especially important in the case of compliance issues, where regulations demand an exact replacement record for any meters related to a particular piece of equipment.

> **Physical Inventory Updates** Customers can more effectively track and manage their physical inventory by keeping inventory information up-to-date and readily available. Datastream 7i Mobile lets users collect and record data in a timely manner, boosts productivity with automated barcoding, and ensures data accuracy and consistency by reducing the need for manual data entry. As a result Datastream 7i Mobile helps companies reduce the unnecessary expenses that come with having too much or too little inventory in stock.

> **Inspections** Datastream 7i Mobile improves the overall efficiency and thoroughness of the inspection process by providing users with a list of inspection points. After completing the inspection, users may enter the results into the Datastream 7i Mobile inspection-result entry lines. These results can be associated with existing work orders or added manually.

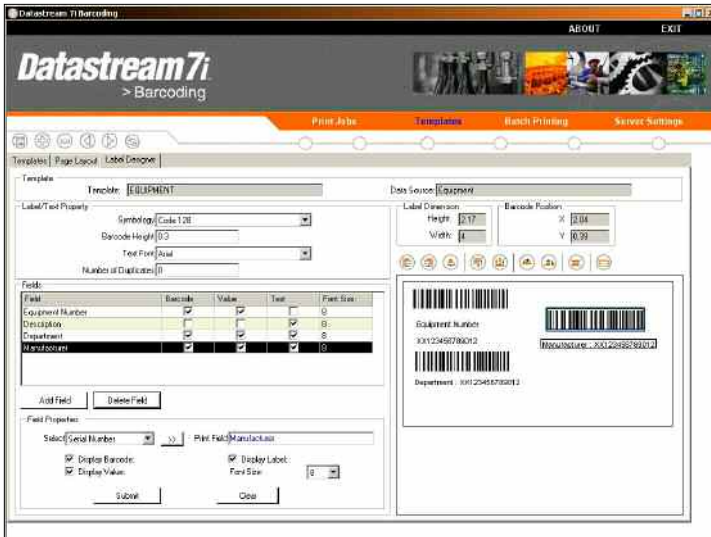




Flexible, Simple and Easy to Use

Datastream 7i Mobile is entirely standards-based, giving customers the ability to easily integrate the application with other business processes in their organization. And while the application itself was designed to be completely operable right out of the box, it can be easily customized to reflect exact terminology and business processes.

Datastream 7i Barcoding Label Designer



Configure barcode labels to suit custom automation needs.

> **Prompt Creation and Configuration** The ability to create and configure prompts helps make Datastream 7i Mobile more intuitive. Users can now consolidate various prompts into a single application. This saves on support costs, allows users to combine data collection and day-to-day Datastream 7i functions, defines a unified barcoding format, and allows for the combined training of users—all which simplify the deployment process.

> **Screen Configuration** In Datastream 7i Mobile, screens may be configured by hiding fields, arranging the location of fields, making certain fields mandatory, and setting up default values for selected fields. Handheld devices may be customized for specific user groups so that their devices reflect the exact screens and fields they need.

> **Synchronization Configuration** Datastream 7i Mobile can distinguish user privileges, enabling the interface to be configured specifically to each user's needs. Datastream 7i Mobile synchronization profiles let the system administrator set up unique profiles—each profile being linked to a Datastream 7i user group. The profiles identify what data to synchronize with the device, which equipment to include, what and how much history to store, which data to include in drop-down lists, and numerous other import and security rules.

Complete Synchronization with the Central Datastream 7i Database

Datastream 7i Mobile Solutions are designed to allow for the true two-way, real-time exchange of data between mobile devices and the central Datastream 7i database. Datastream 7i Mobile receives a set of operational instructions for data entry from the Datastream 7i database relating to a specific operation, such as an inspection or work order. This means that each time a user transmits data to the Datastream 7i database, the entire system is updated. The device-to-database transmission also triggers a return transmission back to Datastream 7i Mobile that updates the previously loaded data. This ensures that data is always up-to-date, regardless of where it sits.

Datastream 7i Barcoding

Barcoding allows users to design and print labels for assets, providing increased mobility and system functionality. Labeling assets streamlines the tracking and relocating of assets, warranty activation and updating, work registration, and other functions. Companies can also assign a barcode to employees to enable them to log their actions quickly, label standard jobs to provide quick access to job activities, or label spare-parts bins for more accurate and efficient storeroom management.



Datastream 7i Barcoding works with all of the information you already have stored in Datastream 7i. With Datastream 7i Barcoding, users can:

- > Extract data from a variety of sources—equipment, parts, receipts, employees and more—using Web services
- > Select a data source for the label
- > Select barcode label formats from a library or create their own
- > Print multiple labels with the same barcode

Taking inventory is just one example of how Datastream 7i Barcoding can streamline a process. The technician who is conducting inventory quickly scans each item that already has a barcode label attached. This data is uploaded directly to the Datastream 7i database where the inventory clerk can identify stock levels and make buying decisions.

As new or replacement inventory comes in or as inventory goes out, the clerk can quickly print labels to be affixed and scanned, thereby increasing the accuracy of inventory while reducing time. The clerk no longer has to manually enter data into a work station, but can now capture data digitally with the click of a button.



13560 Morris Rd.
Suite 4100
Alpharetta, GA 30004
1-800-260-2640



www.infor.com

Copyright © 2001-2006 Infor Global Solutions and/or its affiliates or licensors. All rights reserved. The Infor word and design marks are trademarks and/or registered trademarks of Infor Global Solutions or one of its affiliates. All rights reserved. All other trademarks listed herein are the property of their respective owners.

INFPD_D7IMGEENUS_0905-2