



Datastream 7i



“GASB 34 promises to make asset management more than a management fad. Ideally, it will influence all aspects of highway development and preservation, from planning, design, and construction to maintenance, rehabilitation, and disposal.”

**Daniel Dornan,
Vice President,
Infrastructure Management Group, Inc.**

Asset Performance Management for the Public Sector

Today's Challenges

Today's public sector organizations face complex challenges on many fronts. Citizens expect high-quality services. Government agencies that regulate and fund public-sector organizations require increased reporting and accountability. And in the face of shrinking budgets, public agencies must continually find ways to operate more efficiently, cut costs, and spend taxpayer dollars wisely.

Public managers must also address two newly emerging issues: the need to maintain and preserve America's aging and, in many cases, deteriorating capital assets before they reach "dire need" status and the need to protect the security of assets in the wake of 9/11. These assets include buildings, equipment, land and easements, works of art and historical treasures, machinery, and vehicles. They also include more "long-lived" stationary assets like water and sewer systems, roads, bridges, dams, lighting systems, and tunnels.

Recent federal guidelines, including those set forth in the Governmental Accounting Standards Board Statements 34 and 35 (GASB 34/35) and the Environmental Protection Agency's Capacity, Management, Operation and Maintenance (CMOM) program, call for public agencies to improve the tracking, management, operation, reporting, and financial accountability for the nation's capital assets. And the ability to demonstrate asset management capability is becoming a crucial qualification for receiving lucrative federal grant funding from the Homeland Security Act and other sources.

These challenges are not limited to specific departments or to any one segment of the public sector. Federal, state, and local governments are seeking a solution to what has, until recently, seemed to be an insurmountable challenge. Clearly, accomplishing this goal will require an investment of time and resources.

Addressing The Challenge: Consequences and Opportunities

Public agencies that do not proactively initiate ways to manage, operate, and report on public assets more effectively could face a number of potential consequences, including a lower bond rating, higher interest rates, loss of federal funds, increased regulation, legal action, and a loss of public confidence.

Investing the resources required to meet this goal does, however, offer important opportunities and advantages for public administrators. Billions of taxpayer dollars are lost every year due to equipment downtime, inaccurate parts inventories, and inefficient management of capital assets. With solid, usable information on assets and their performance, public managers can intervene proactively to solve current problems, anticipate future problems, and develop best practices for providing better citizen services and maximizing resources.



Meeting the Challenge: Asset Performance Management

Asset performance management has emerged as an effective strategy for meeting the challenges faced by the public sector. Asset performance management is a process that requires the ability to manage, maintain, and track assets, such as equipment, buildings, vehicle fleets, roads and pipelines, from purchase to disposal and to use asset data to operate more efficiently and make better business decisions. Public sector organizations across the nation – including Miami-Dade County, the City of Philadelphia, City of Greensboro, City of San Jose, New York City Fire Department, City of Houston, City of Chicago, Denver Metro, Michigan State Police, Clemson University, New York State Thruway, the National Institutes of Health, and United Water – have chosen Datastream to help them implement an asset performance management solution.

“Upgrading to Datastream 7i was a great move for our organization. Besides being incredibly simple, it gave us a host of new capabilities that helped us transform our business processes in ways we never imagined.”

Michelle Hutchings,
System Administrator,
Clemson University

Why Datastream? A Step Above The Rest

Datastream’s suite of asset management solutions offers public agencies an integrated system-wide approach that includes Datastream’s flagship software product, Datastream 7i™, data analysis tools, and consulting services. In addition, Datastream offers unique public sector-specific best practices knowledge and experience gained from customers in cities, municipalities, and government agencies around the world. Datastream is helping these agencies improve services to citizens, operate more efficiently, meet compliance and regulatory demands...and discover hidden cost savings.

Take a look at the reasons public-sector customers cite for choosing Datastream to provide asset management solutions for their organizations:

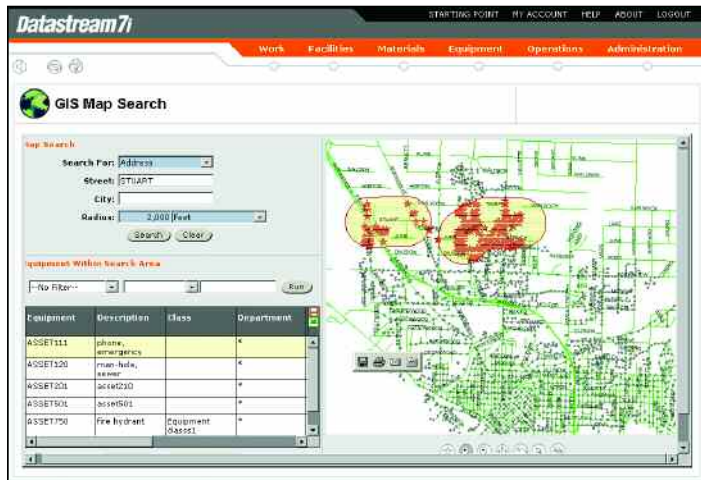
- > **Wide Customer Acceptance and Project Management Expertise** With customers in more than 1200 cities, municipalities, and government agencies, Datastream offers a team of highly qualified professionals who have gained significant expertise implementing Datastream’s asset management solutions in public-sector organizations across the world. Datastream understands the factors that are critical to success and can deliver what is needed to implement a successful, cost-effective, and fully operational asset performance management solution to meet the specific needs of public-sector organizations now and in the future.
- > **Best-Of-Breed Functionality** Public sector organizations frequently are responsible for both linear and point assets, introducing a unique challenge. The *linear assets module* in Datastream 7i meets that challenge by enabling users to define an asset in terms of linear reference details like length, unit of measure, and geographic reference. Users can write work orders against any portion or point on that asset by specifying to and from points. For example, when work is performed at a specific point on a linear asset—like replacing a portion of a pipeline—the cost and work involved in that repair is attributed to the specific portion of the asset rather than the entire asset. This allows more accurate analysis and maintenance of the linear asset. Datastream 7i also enables dynamic segmentation from within the linear asset feature, meaning that while users are working with a specific segment of an asset they can easily change the segment where work should be performed. For example, a work order can be issued between mile markers 5 and 7, but when the road crew gets to the site only the area between mile markers 5 and 6 require work. The work order is adjusted and the costs and work are assigned to the correct segment.



The Datastream 7i *seamless integration with Geographical Information Systems (GIS)*

gives users the ability to easily locate the position of assets on a map. This visual display of an asset's location can provide value to customers with widely dispersed assets, including networked linear assets,

GIS Map Search



Datastream 7i provides a method of locating assets on a map, inquiring about their history, and creating and assigning work for them.

and human resources into one seamless asset management solution. This capability promotes improved collaboration among government divisions and departments, a lower cost of ongoing support and upgrades, and a faster path to a system go-live.

Datastream 7i includes the *most extensive implementation of Web services* of any asset management solution today. This architecture allows companies to use Datastream's Web Services Toolkit to easily link central enterprise systems and expose real-time critical asset management functionality using familiar applications. Datastream's Web Services Toolkit arms companies with a tool to share real-time asset information with other enterprise applications. By allowing users to choose their interface, companies can leverage their existing business processes or tailor specific business processes to their operations.

Datastream 7i Mobile offers *remote access to critical data* on virtually every aspect of asset maintenance, including Work Order, Inspections, and Inventory Management by using docking cradles or handheld wireless devices such as Pocket PC or barcode scanners. This advanced module offers a standardized format to capture and transmit data back to the Datastream 7i database for validation and processing through Datastream's Application Program Interfaces (APIs), which are included in the base product. Hardware and software for the data collection functions are sold as separate advanced features.

"Datastream 7i tracks real-time information on warranties, repair history and maintenance statistics giving CMBC consistent and reliable data and leading to improved decision-making processes."

Wayne Bourdeaud'Huy,
Project Manager,
Coast Mountain Bus Company

> **Support For Regulatory Compliance** Datastream 7i provides the most powerful solution for tracking and reporting asset information to ensure compliance with GASB 34/35, CMOM and other regulatory guidelines. Datastream 7i tracks depreciation schedules and asset condition histories to comply with GASB 34/35 standards, generates National Pollutant Discharge Elimination System (NPDES) reports for EPA compliance, and manages inspections to comply with CMOM. For example, CMOM requires wastewater utilities to identify weaknesses, develop a corrective action plan, and document how problems are corrected.

Datastream 7i's inspection capabilities allow sewer companies to determine preventive maintenance schedules and predict the end of an asset's useful life, making condition assessments more accurate.

> **Solutions to Measure Customer Satisfaction and Organizational Performance** Datastream 7i includes a wide range of standard, preconfigured reports and dashboard reporting tools to monitor performance and customer satisfaction within various areas of an organization. Using Datastream 7i, organizations can track and analyze data on customer complaints and satisfaction with work performed. They can then create interactive graphs to identify problem areas and trends and develop best practices to streamline processes, improve productivity and performance, and help manage growth without increasing service rates. Integrated reporting and data analysis tools take the complexity out of ad-hoc reporting.

“Datastream 7i gives us the flexibility to tailor the system to meet our specific needs and requirements as they exist today and as they change over time.”

Michael Cramer,
Business/Parking Division Manager,
Department of Transportation,
City of Greensboro, NC

> **Standardization of Data Across Multiple Departments** Datastream 7i enables organizations to access information across multiple locations via a Web browser or a handheld device. Datastream 7i also enables individual departments or units to personalize assets and satisfy their unique needs while integrating asset information from existing applications across multiple departments into one consolidated database. For example, city water departments and airports both operate vehicle fleets and maintain specific data on tire repair and replacement. Datastream 7i's multi-organization capability enables city governments to consolidate and share individual data from these two areas to negotiate the best price on tire purchases.

> **Reduced IT Costs Of Managing And Maintaining Assets** Because it is designed exclusively for the Web, Datastream 7i is a cost-effective enterprise solution that can be deployed at a single location or utilized across all facilities. Datastream 7i's Web-based, function-rich architecture has proven its reliability, stability, and flexibility in a Web environment with an impressive number of public-sector customers. Every module can be accessed through a browser without the use of expensive, third-party Web-enabling tools.

In addition, Datastream 7i can be deployed via an organization's own existing data center or through Datastream's industry-leading hosted data center. Datastream's hosted solution eliminates the need for an organization to invest in information technology hardware, a database and peripheral licenses and other IT resources, which can substantially increase the return on investment for an asset management system.

With more than 28 percent of total revenue in the hosted Enterprise Asset Management (EAM) market, ARC Advisory Group ranked Datastream the top supplier of hosted and computerized maintenance management systems (CMMS) in its EAM/CMMS Solutions Worldwide Outlook, a market analysis and forecast of the industry through 2006.

Government organizations around the world rely on Datastream to help them maximize every dollar spent on procuring, maintaining, and managing capital assets.

With Datastream 7i, public-sector organizations can:

- > Meet government regulations
- > Achieve total control over their maintenance operations
- > Optimize assets
- > Improve efficiencies
- > Reduce administrative costs
- > Maximize return on investment

The end result is satisfied constituents, employees, and public officials.



13560 Morris Rd.
Suite 4100
Alpharetta, GA 30004
1-800-260-2640

www.infor.com

Copyright © 2001-2006 Infor Global Solutions and/or its affiliates or licensors. All rights reserved. The Infor word and design marks are trademarks and/or registered trademarks of Infor Global Solutions or one of its affiliates. All rights reserved. All other trademarks listed herein are the property of their respective owners.

INFPB_DPBSGEENUS_0706-1