



Datastream

“MP2 provides tangible numbers for labor, equipment, and cost. MP2 gives me an honest, well-documented account of how we’re doing. It’s an extremely valuable tool. Regardless of the size of the task, it’s documented. This increases our accountability and saves us time and money.”

Jeff Dupaul,
Assistant Plant Manager,
The Siemon Company

MP2

Consistently praised by customers and industry analysts, Datastream offers the easiest maintenance software packages to learn and use. MP2’s ease-of-use and practical features are designed to streamline asset management—resulting in reduced downtime, controlled inventory, and lower procurement costs for customers. MP2 helps customers complete critical asset management functions:

- > Managers use MP2 to quickly access historical costs, performance characteristics, and warranty information associated with an individual asset or across a broad class of assets to decide whether incremental repairs are needed or if replacement is the answer.
- > With up-to-date location and usage information from MP2, companies share assets across sites and between divisions, increasing an asset’s productivity.
- > MP2 allows companies to manage maintenance processes, collaborative workflow, reporting and analysis, inventory, financial and budget information, logistics, and ecommerce.
- > With Datastream’s fully integrated procurement network, companies can automate their maintenance, repair, and operations supply chain with demand-driven purchasing and inventory systems. This amounts to real dollars that can make a real difference to a company’s bottom line.
- > MP2 gives users complete access to asset history, helping them determine whether an asset should be sold and increasing value at the time of the sell. MP2 offers users accurate, up-to-date information that is necessary to assess the total cost of ownership of an asset and to make decisions that benefit the organization.

Platforms

Based on Microsoft Windows® operating systems, MP2 is available on an Oracle, SQL, or Access database depending on a company’s needs. For those interested in a Web-architected or hosted product, Datastream offers Datastream 7i—a 100% pure Internet application.

MP2 Modules

MP2 provides customers with an organized, accountable system for effective asset management. Through various modules, customers have easy access to maintenance and inventory histories as well as in-depth analysis on equipment reliability, inventory use, and planned maintenance.

Equipment

After acquiring assets, start tracking the important details with MP2’s Equipment module. In addition to sorting basic asset information, this module allows users to list one or more meters for each piece of equipment, enter spare parts associated with assets, enter asset locations and sub-locations, and create service contract records for equipment under warranty.



Inventory

MP2's Inventory module stores extensive, detailed information for each item or part used during the maintenance of equipment. Create inventory records for all of your facility's maintenance parts, create vendor records for the companies from which items or services

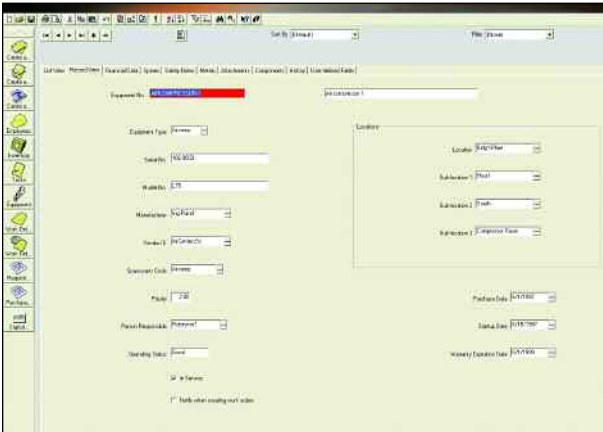
are purchased, and calculate and graph items used month-to-date and year-to-date. Use this module to check out, return, adjust and move inventory items so that less money is tied up in unused assets and necessary parts are always available.

Labor

MP2 helps customers manage all of their assets—including the individuals involved in the maintenance process. Using the Labor module, administrators enter rates, salaries, skill levels, training requirements, completed training information, and certifications for each employee. This documentation helps companies comply with ISO 9000, OSHA, Joint Commission, HAZMAT, employee training, and workforce development requirements.

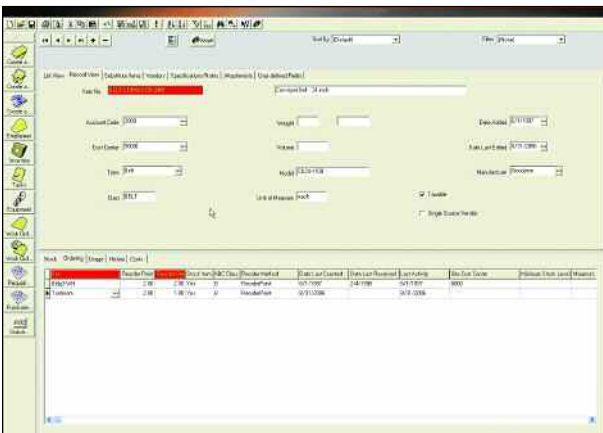
Purchasing MP2's Purchasing module allows users to calculate costs for purchase orders, automatically generate requisitions, and order parts and supplies efficiently. Extend the functionality of MP2's Purchasing module with Datastream 7i Buy, Datastream's integrated procurement network. Datastream 7i Buy, an advanced module, brings together customers and a wide range of suppliers whose catalogs contain more than five million industrial parts. Directly from MP2, customers determine parts needed, review catalogs online, and purchase items at volume discounts—all with the click of a button. Purchasing history is automated and stored within MP2—making buying fast and easy.

Equipment Screen



The equipment module enables you to track costs, activities, location, and hierarchy.

Inventory Screen



Maintain an efficient, cost-effective, inventory by tracking parts usage on work orders and costs through purchasing and by controlling warehouse inventory ordering processes.

Reporting and Analysis

Track the life of assets using MP2's Reporting and Analysis module. Select from over 150 pre-built reports including equipment, inventory, labor, purchasing, scheduling, statistical predictive maintenance, task, work request, and work order reports and from over 100 combinations of graphs.

Scheduling

Schedule facility operation days, record employees' extra work hours or missed work-hours, and record equipment downtime information with MP2's Scheduling module. This module helps companies avoid resource shortages and over utilization—eliminating unnecessary labor costs and increasing profitability.

Security

Using the Security module to protect the validity of data, administrators create user accounts and passwords, create security groups and assign users to them, and limit access at the menu, form, and field level. The security measures minimize the chance of data altering and contamination.



“Using MP2, job completion rates for planned maintenance have improved by 28%, and the number of unplanned jobs has decreased by 20%. Critical decisions can now be made based on actual, not perceived, performance.”

Alan booth,
Operations Engineer,
Rand Refinery

Statistical Predictive Maintenance

Statistical process controls help predict and prevent equipment failure. MP2's Statistical Predictive Maintenance module flags equipment to be checked based on statistical exceptions and tracks conditions for each maintenance task, including qualities that are observable but not quantifiable such as color, temperature to touch, clean or dirty oil.

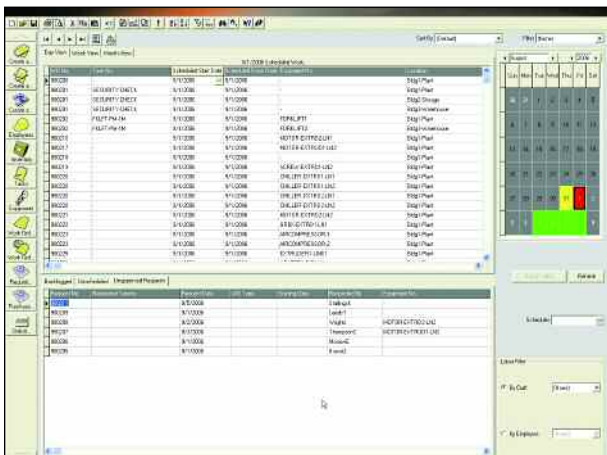
Tasks

MP2's Tasks module allows users to create task records for a facility's repetitive maintenance tasks, assign tasks to a specific person or a user-defined group, and enter instructions, safety procedures, and specialized maintenance information. With the ability to print task instructions on work orders, MP2 delivers integral information straight to the personnel who need it. Use this module to schedule preventive-maintenance tasks to avoid equipment failures and increase productivity.

Work Orders

The Work Orders module generates work orders for scheduled maintenance work, quickly updates labor, parts, and comments for multiple work orders and then closes them, and manages work order assignments. This module allows users to track labor costs and manage work order assignments easily, helping reduce unscheduled downtime.

Scheduling Screen



Quickly view the work order schedule to gather information concerning the current maintenance resource allocation in daily, weekly, and monthly views via the color-coded calendar.

Work Requests

MP2's Work Requests module enables users to create on-site and call-in requests. Quickly enter requests that tenants call in, and then immediately create work orders from the requests or create requests for equipment-related or location-related maintenance work. Monitor the status of work requests, and open, close, and update them as necessary. Make asset management even easier and extend functionality with MP2's advanced module options—MP2 WebLink, MP2 Messenger, and Pocket MP2. Submit purchase requests and work requests using a standard Web browser, send instant e-mail updates from MP2 when a work order or purchase order status changes, improve emergency response time for repairs, and store and enter data from the field with a hand-held device.

Services

Datastream's unparalleled consulting, training, and technical support services ensure the best functionality of its solutions. Regional, online, and custom training classes help customers maximize the impact of Datastream's software. In addition, Datastream adds convenience with online and telephone technical support, remote diagnostics and correction tools, and an online database that allows users to search for software solutions or create support incidents.

Datastream consistently delivers the quality, reliability, and cost efficiency companies need to maintain a world-class operation. By implementing MP2 and taking advantage of Datastream's exceptional support services, companies can reduce costs and add significantly to their bottom line.



13560 Morris Rd.
Suite 4100
Alpharetta, GA 30004
1-800-260-2640



www.infor.com

Copyright © 2001-2006 Infor Global Solutions and/or its affiliates or licensors. All rights reserved. The Infor word and design marks are trademarks and/or registered trademarks of Infor Global Solutions or one of its affiliates. All rights reserved. All other trademarks listed herein are the property of their respective owners.

INFPB_DMP2GEENUS_0703-1