

mp2.
remote
access

Datastream[®]
> www.datastream.net

> global leader

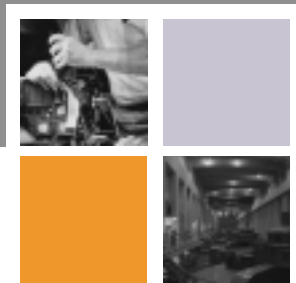


TABLE OF CONTENTS

About Datastream	1
Asset Lifecycle Management	1
Remote Access Overview	1
WebLink and Messenger	1-3
Pocket MP2	4
PagerLink	4

DATASTREAM

Datastream is the global leader of technology-based solutions for asset lifecycle management. Through its award-winning line of asset management tools and services, Datastream enables customers around the world to make better decisions, run their operations more efficiently, and increase profitability. Datastream understands that to reach these goals, companies must manage their assets throughout their entire lifecycle. As a result, Datastream is committed to providing the applications, training, professional services, and support that companies need for better asset lifecycle management.

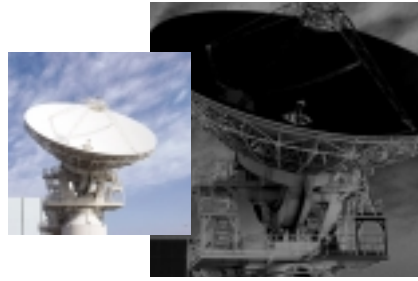
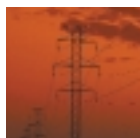
ASSET LIFECYCLE MANAGEMENT

By evaluating and managing each phase of an asset's lifecycle—buy, track, manage, and sell—organizations are rewarded with improved economic returns from their capital assets. Called asset lifecycle management, this process involves managing assets from purchase to disposal, allowing companies to operate more efficiently, maximize their returns on investment, and increase available operating capital.

"We expect Datastream to help us better manage our assets from the time we buy them to the time we dispose of them. This capability allows us to maximize our capital investments."

COLIN MACDONALD

Vice President of Sales and Marketing
Airport Services
FMC Airport Systems



REMOTE ACCESS TOOLS: A DIRECT LINE TO ASSET LIFECYCLE MANAGEMENT

The goals of asset lifecycle management are to create greater efficiency and improve profitability. By offering remote access tools, Datastream addresses these goals and helps customers exchange information more efficiently to improve workflow. Tracking work, checking the status of tasks, ensuring the flow of vital information—all these goals may be reached with the ability to connect. Datastream's remote access technology makes these connections possible, allowing companies to turn their asset management software into a mobile management solution.

Datastream's remote access add-ons seamlessly integrate with MP2. This increases a company's ability to manage assets across locations with one integrated solution and get maximum benefits from their assets. The capabilities include a continuous connection to asset management software through the Internet or an intranet with WebLink, instant e-mail notifications with Messenger, handheld devices that receive or collect data about assets with Pocket MP2, and text-paging notifications with PagerLink.

WEBLINK AND MESSENGER: EASE-OF-USE TECHNOLOGY

Offering the speed and convenience of the Web and automatic e-mail updates, WebLink and Messenger help companies operate more efficiently and accurately. By enhancing Datastream software with existing Web technology and e-mail functionality, Datastream increases a company's ability to manage assets across locations and get instant updates on the status of purchase and work orders through one integrated solution.

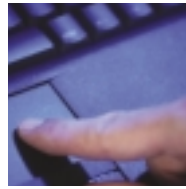


> Making Asset Management as Easy as Opening a Web Browser

Extending MP2 to various locations and departments—whether it be across the hall or across the country—enhances maintenance

management and performance. With WebLink, companies leverage their intranet or the global Internet to make the software database accessible to anyone with a Web browser. Resulting in a lower total cost of ownership, administrators load MP2 on a single server, establish and monitor access rights, and users access MP2 from any PC or Macintosh workstation that has a Web browser—without buying additional software licenses or having to load the software on their individual machines.

Through WebLink, users submit, review, and approve or reject work and purchase requests. WebLink's remote access functionality also allows users to search maintenance requests in the database by work order number, task description, originator, status, who the task is assigned to, and work order type. Because WebLink gives more access to more users without extra hardware or software requirements, customers maximize MP2 functionality while saving time and money.



> Automated E-mail Notifications for Improved Maintenance

Automatically notifying personnel when a work or purchase order is requested, approved, and

completed reduces redundant purchasing and downtime and ensures more efficiency. By adding Messenger to MP2, user-defined recipients may receive e-mail notifications at pre-defined intervals following a change in work or purchase-order status. The automatic messages keep personnel updated on actions such as work or purchase order requests, approvals, completions, and purchase order receipts as well as deletions in the database.

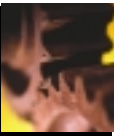
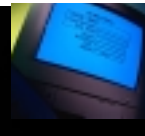
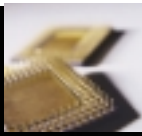
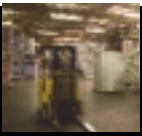
With Messenger and MP2, companies automate requests and approvals and reduce the sluggish response times commonly caused by paper-based and manual systems. As a result, personnel react to requests much more efficiently and productively.

POCKET MP2: HANDHELD ASSET MANAGEMENT FUNCTIONALITY

By combining MP2 with the dexterity of Windows CE handheld devices, Datastream enables users to tap the power of a workstation with a device that fits in the palm of their hand. Using a handheld device of choice and Pocket MP2, customers take advantage of the ultimate in maintenance management portability and user flexibility—around the corner or around the world.

Users may download work assignments from their database using docking cradles or dial-up and wireless connections, which automates virtually every aspect of maintenance and data collection. In addition, users create field-based work orders, use drill-down menus to retrieve detailed information about a piece of equipment, capture actual wrench time as work occurs, and rely less on erratic paper-based systems. For example, the hospital industry needs a tool that allows personnel to move from room to room and still be able to note what maintenance needs to be performed. Pocket MP2 allows them to capture the information they need on the spot, without having to write out the information and then re-key it into a system later. Pocket MP2 is also popular for customers who have remote, off-site or multiple locations with few or no computers.





"Although we retain a certain amount of hard copies for our records, Pocket MP2 has really helped eliminate a lot of unnecessary paperwork. It makes for very flexible communication, and it provides immediate access to work order information."

JEFF DUPAUL
Assistant Plant Engineer
Siemon Company

With Pocket MP2, managing mobile assets, remote sites, and entire facilities is possible with one integrated asset management solution. The functionality extends a company's ability to improve productivity by giving maintenance personnel unlimited mobility and ensuring that accurate data drives scheduling, budgeting, and personnel concerns. From barcoding to work order fulfillment, Pocket MP2 provides the true freedom that enables companies' assets to perform at their best.



PAGERLINK: TARGETING WORK REQUESTS WITH PAGER TECHNOLOGY

The ability to quickly address problems as they arise decreases downtime and ensures future success. However, always having the right personnel available at the right time to perform maintenance or repair broken machinery is a challenge. With PagerLink, tasks are assigned automatically and the appropriate personnel are notified with text or numeric pagers—a superior alternative to physically locating maintenance personnel who are frequently on the move.

Because PagerLink automatically notifies personnel, they are able to efficiently complete time-critical or emergency work. Administrators are able to create criteria, such as the priority of the equipment and request, and set pre-determined intervals between transmissions. If there is no response, PagerLink escalates the notifications incrementally from one employee to the next and on to the supervisor. PagerLink ensures that maintenance personnel always stay informed and is an economically justified way to guarantee less downtime and improved productivity.



"It's essential that we have remote access, and Datastream provides that access via the Internet. It's a great way to get everyone—both on-site and off-site—linked to the same system."

TRACY HUFF
Senior Systems Analyst
Barrick Gold Corporation

DATASTREAM'S COMPLETE SOLUTIONS

Datastream's unparalleled consulting, training, and technical support services ensure the best functionality of its solutions. Regional, online, and custom training classes help customers maximize the impact of MP2 and Datastream's remote access products. In addition, Datastream adds convenience with online and telephone technical support, remote diagnostics and correction tools, and an online database that allows users to search for software solutions or create support incidents.

Datastream consistently delivers the quality, reliability, and cost efficiency companies need to maintain a world-class operation. Founded in 1986, Datastream has customers in 129 countries with products and services in use by 65% of the Fortune 500. With its remote access add-ons and value-adding services, Datastream provides companies with the tools they need to reduce costs, improve productivity, and add significantly to their bottom line.

To optimize asset lifecycle management and increased returns on investment, call **1.800.955.6775** (USA and Canada), or visit **www.datastream.net**.

Datastream, iProcure, and MP2 are registered trademarks and Datastream 7i is a trademark of Datastream Systems, Inc. All other trademarks are the property of their respective owners.

Datastream[®]

> www.datastream.net

50 Datastream Plaza
Greenville, SC 29605
1.864.422.5001 direct
1.800.955.6775 USA and Canada
1.864.422.5000 fax
info@datastream.net