

Datastream 7i for Warehouse & Distribution Management



Managing a warehouse is more than moving a widget from point A to point B. It is a finely orchestrated system of equipment and people with the goal of processing product safely, efficiently and at high quality. From the receiving dock to

loading the transport container, throughput is king.

Datastream 7i Asset Performance Management software helps manufacturers and distributors meet efficiency and safety goals through:

- > Preventive Maintenance
- > Efficient Workload Management
- > Effective Inventory & Purchasing Management
- > Detailed Warranty Tracking
- > Advanced Analytics

Preventive Maintenance

Preventive maintenance allows warehouse and distribution centers to make proactive decisions about their operations and avoid costly emergency repairs. With preventive maintenance (PM), users create PM tasks based on a fixed date, flexible time period, or meter usage. Users may incorporate routes with a PM task to service multiple assets that share similar PM requirements—such as all conveyors—under a single work order. Datastream 7i can automatically adjust PM schedules to compensate for early or late PM work accomplishment.

Datastream 7i also offers PM revision control to track modifications and control the authorization of modifications to PM scheduled tasks, materials, and routes. With PM revision control, establish a control system for approving changes that are made to scheduled periodic preventive maintenance.

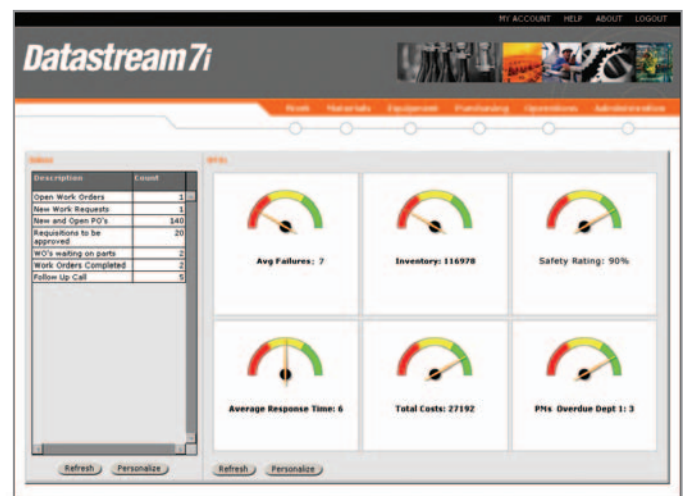
"We are able to automate the entire work-order process by using Datastream 7i."

:: Kevin Tremmel, Fleet Manager, Bradco Supply ::

Efficient Workload Management: Inbox and Key Performance Indicators

Each Datastream 7i user has a personalized Inbox and set of key performance indicators, or KPIs. KPIs simplify performance measurement by showing how warehouse and distribution assets stack up against user-defined benchmarking information—giving warehouse managers an accurate picture of operations. Through the inbox, workers can immediately see what requires their attention and with a single click get all of the required details to complete the task. Improved efficiency in the workforce results in increased throughput.

Inbox and KPIs



Create KPIs critical to your warehouse, such as safety ratings or throughput percentage, to view warehouse performance at-a-glance.

Effective Inventory & Purchasing Management

Datastream 7i includes a **Materials Management** module that helps monitor and control the inventories of storerooms. These tools—including economic order quantity (EOQ) and class calculations and assignments—support parts receipts, issues, returns, and cycle counts. Datastream 7i Materials Management offers a choice of automatic storeroom replenishment methods: Min-Max or Reorder Point-Order Quantity. Unique to Datastream 7i, users can select a different set of replenishment criteria for individual stock items, enabling increased flexibility and automation. For example, a warehouse manager can set up automatic reorder of an inventory item when there are fewer than five items remaining in stock. What's more, reorder numbers can be set up to correspond with negotiated discounts that the warehouse holds with vendors. This ensures that the stock is not only always in place, but that the negotiated savings are realized. This module is designed to minimize inventory holdings while fully supporting part and supply demands.

“Datastream 7i gives us a single solution for ensuring optimal asset performance.”

∴ Eric Dombkowski, Maintenance Area Manager,
Solvay Paperboard ∴

Barcoding allows users to design and print labels for assets, providing increased mobility and system functionality. Labeling assets streamlines the tracking and relocating of assets, warranty activation and updating, work registration, and other functions. Companies can even label employees to enable them to log their actions quickly, label standard jobs to provide quick access to job activities, or label spare-parts bins for more accurate and efficient distribution management.



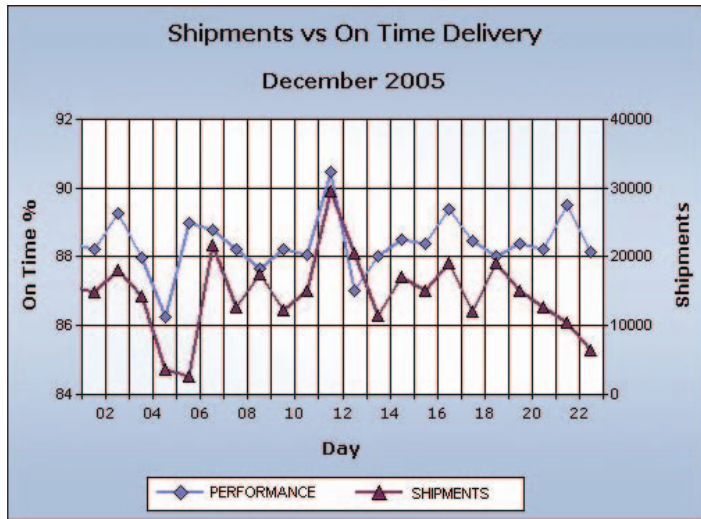
The **Purchasing Management** module helps companies ensure that the right parts are ordered and keeps up with delivery times, vendor performance, payments, and goods receipts. This module addresses blanket purchase orders and quotation processing. And, for those wanting integrated procurement, Datastream also offers a seamless integration with Datastream 7i Buy.

Datastream 7i Buy, an advanced module, automates the procurement of spare parts and other inventory items by connecting buyers and over 150 industrial suppliers. Through the Internet, Datastream 7i Buy expands the functionality of purchasing, inventory, and supply chain management. Warehouse managers can plan work, track parts usage, manage stock levels, and replenish stock via the Internet. Having the right part in stock at the right time ensures that the line stays up and running and reduces costs associated with emergency or expedited shipments.

Detailed Warranty Tracking

The exclusive **Warranties and Warranty Claims** feature of Datastream 7i allows users to track asset warranties, process warranty claims, and provide for unlimited warranties against any asset, such as pallet jacks, fork lifts, and conveyors. Datastream 7i accommodates both meter- and date-based warranties and automatically tracks all work orders in the system that have a potential claim. In addition, Datastream 7i retrieves the work orders for claims processing, posts specified meter readings for claims and historical purposes, and allows for time-elapse warranties on consumable parts not registered as assets. Claims actually segregate the various costs associated with warranty management (labor, stock items, hired labor, direct outs, services, and/or tools) so that a customer always has a detailed picture of claim potential. The system includes a convenient warranty claim report that can be used as hard-copy exchange with the warranting vendor or manufacturer.

Datastream 7i Analytics



Use Datastream 7i Analytics to make informed business decisions based on operational trends.

Advanced Analytics

One of the most powerful assets a company holds is its data—whether it is data about inventory, purchase orders, warranties, production, manufacturing costs, or employees. But a company needs to be able to do more than just collect and manage data. Datastream 7i Analytics gives business managers tighter control over the state of their operations through analysis tools and a powerful data warehouse. The system provides a single point of view that incorporates data from any number of disparate sources to help warehouses:

- > Collect data using Datastream 7i—such as quality by month, safety by month, damage percent, and through-put
- > Analyze the data and model “what if” scenarios to predict future performance
- > Make better-informed business decisions to optimize asset performance and improve overall productivity

Using Datastream 7i Analytics, business and technical managers alike can mine their assets to identify trends and anomalies that help them make better forward-looking decisions. For example, a warehouse can compare

preventive maintenance completion to throughput rates to build a correlation and project how a change in PM handling will impact their production. They can overlay endless sets of data—including salary per unit of throughput, maintenance costs for a type of equipment or the entire warehouse—to determine what factors are impacting throughput. Once contributing factors are identified, the warehouse manager can take action. And managers can be certain that the analysis is completely accurate, reliable, and applicable because it is based on the actual business data that is captured on a day-to-day basis through Datastream 7i and other enterprise systems.

"Datastream 7i tracks real-time information on warranties, repair history and maintenance statistics giving CMBC consistent and reliable data and leading to improved decision-making processes."

∴ Wayne Bourdeaud'Huy, Project Manager, CMBC ∴

Datastream 7i helps warehouse and distribution centers effectively manage their stock, keep track of critical assets, and maintain an efficient operation. To find out how Datastream can implement an asset performance management solution, call 1.800.955.6775 (USA and Canada) or visit www.datastream.net.

Datastream®

> www.datastream.net

50 Datastream Plaza
Greenville, SC 29605 USA
1.864.422.5001 direct
1.800.955.6775 USA and Canada
1.864.422.5000 fax
info@datastream.net